



**HEB**  
SYSTEMTECHNIK

# **Valve technology for Wastewater treatment plants**

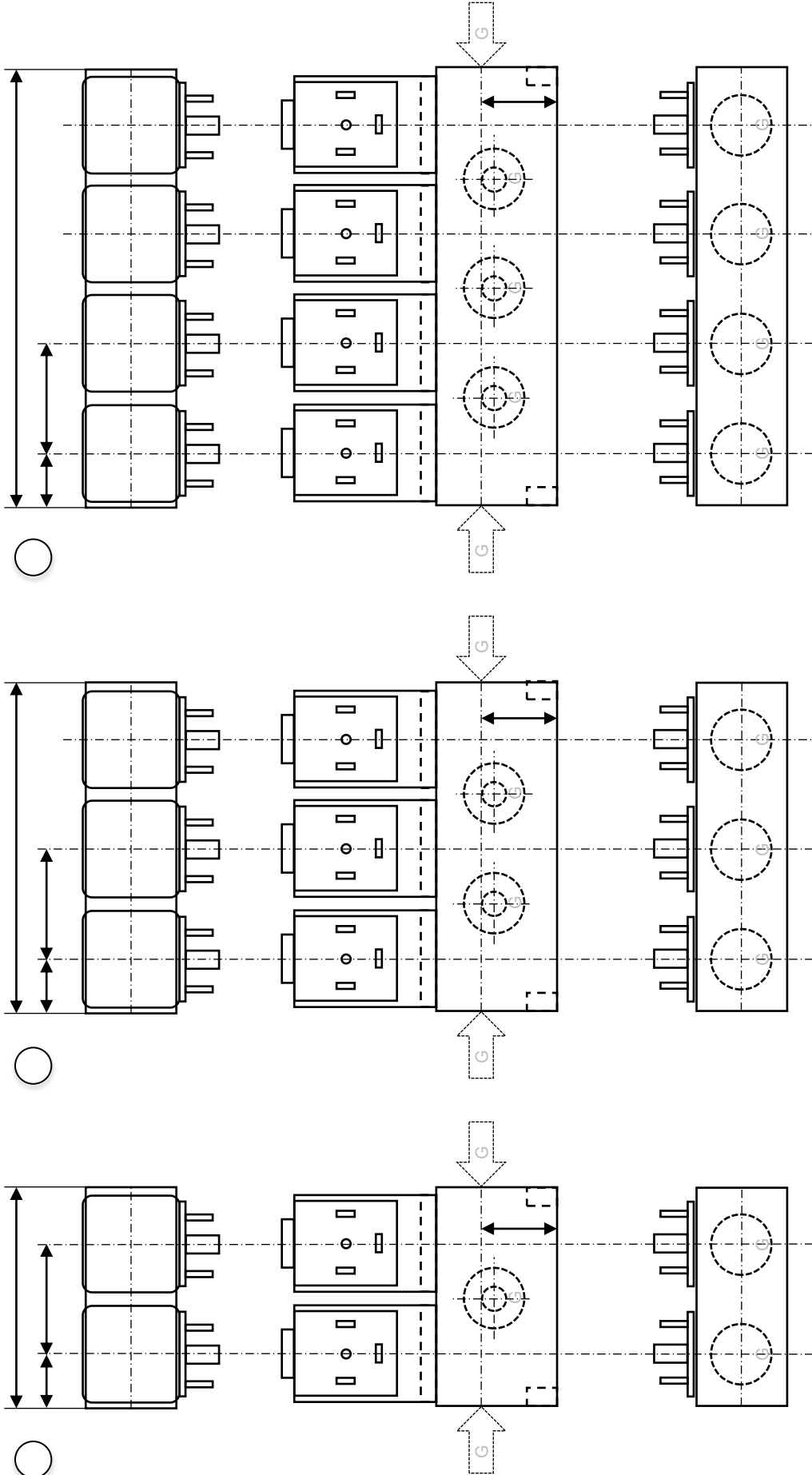
*Alles integriert!*

---

HEB Solenoid valve-Air maonifolds

Inquiry form

Date:	Customer:.	Contact person:.	Qty/year:.	Voltage:	230 V/AC	24 V/DC
Editor:.	Customer item no.:.	Item no.:.	Delivery lot:	Plug connector:	Cable:	



*Alles integriert!*



**HEB**  
SYSTEMTECHNIK

## Air manifolds

For wastewater treatment plants

### Technical data:

Design:	n-fold manifold with n outlets
Function:	NC-normally closed
Connection Type:	thread / socket
Connection size:	inlet G1/2 or G 3/4
Qty outlets:	n-times G1/2 or G 3/4
Operating pressure:	0 to 0,4 bar
Nominal diameter:	13 mm
Material body:	Aluminum
Material seal:	NBR (Perbunan)
Temperature, ambient:	-10°C to +70°C
Temperature, fluid:	-10°C to +50°C
Supply voltage:	230V 50Hz / 24V/ 205V (Silent)
Power consumption:	60mA
Protection class:	IP54 (with plug connector)
Grid dimension:	individual



plug connectors with  
prefabricated  
cables

equipping and quantity  
acc. to your specifications

mounting holes or  
Clips acc. to your  
specifications

Plastic or brass  
Hose connectors

qty and grid dimension  
of outlets acc. to your  
specifications

inlets/ measuring connections  
acc. to your specifications

**NEW**

- Noise reduced design "Silent" with shock absorption of the plunger available in 24V DC and 205V DC

*Alles integriert!*



**HEB**  
SYSTEMTECHNIK

## Air manifold-system– „Air-Brick“

The module valve system for wastewater treatment plants

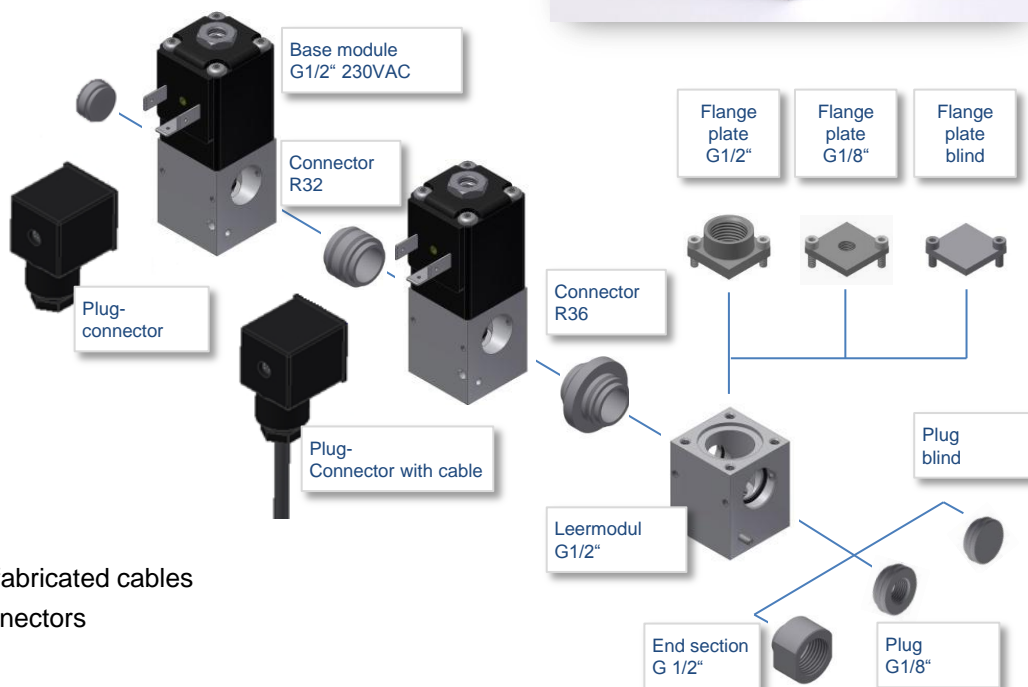
### Technical data:

Design:	stackable modular valve
Function:	NC-normally closed
Connection type:	Thread/ socket
Connection size:	Inlet G1/2
Qty outlets:	n-times G1/2
Operating pressure:	0 to 0,4 bar
Nominal diameter:	13 mm
Material body:	Aluminum
Material seal:	NBR (Perbunan)
Temperature, ambient:	-10°C to +70°C
Temperature, fluid:	-10°C to +50°C
Supply voltage:	24V / 205V DC
Power consumption:	60mA
Protection class:	IP54 (with plug connector)
Grid dimension:	32 or 36mm



### Characteristics:

- Due to the modular system customized to your application
- Variable quantity of outlets
- Easy upgradable



### Optional:

- Plug connectors with prefabricated cables
- Plastic or brass hose connectors
- Customized connectors

*Alles integriert!*



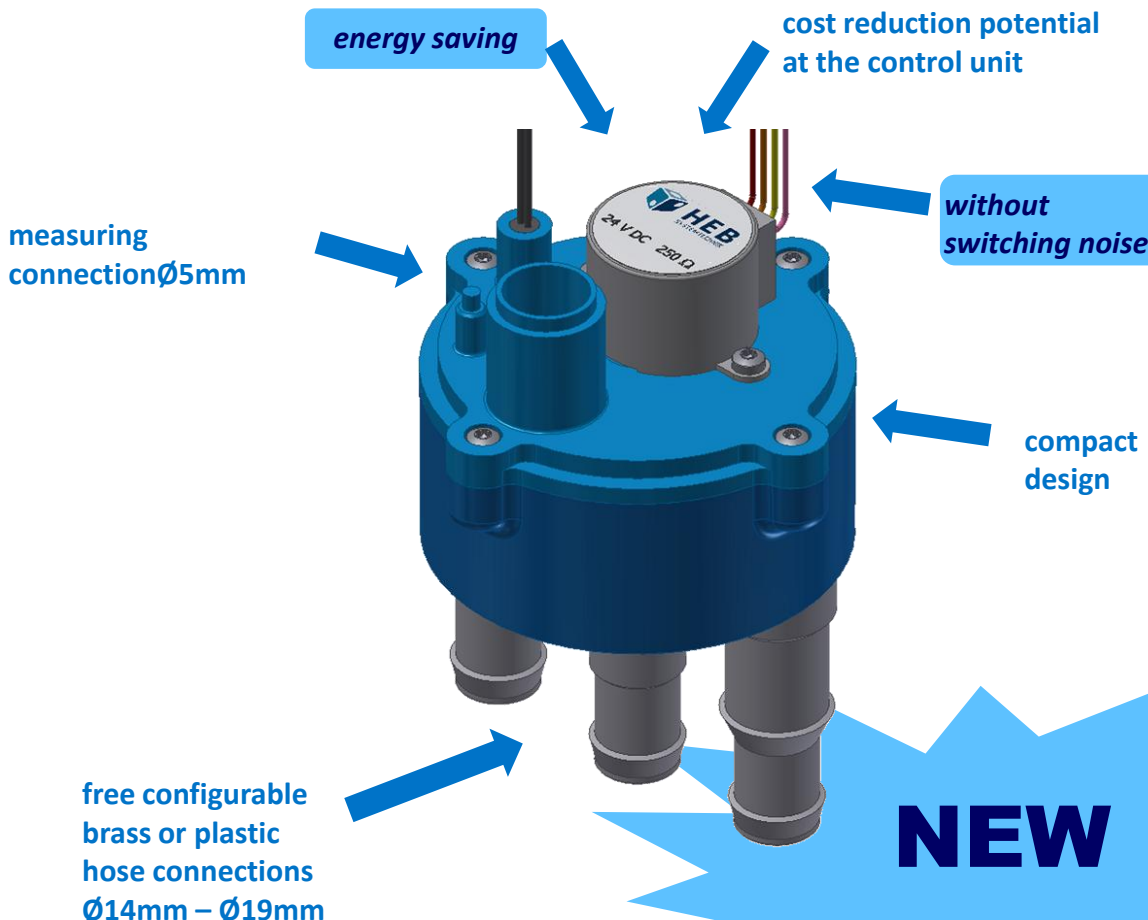
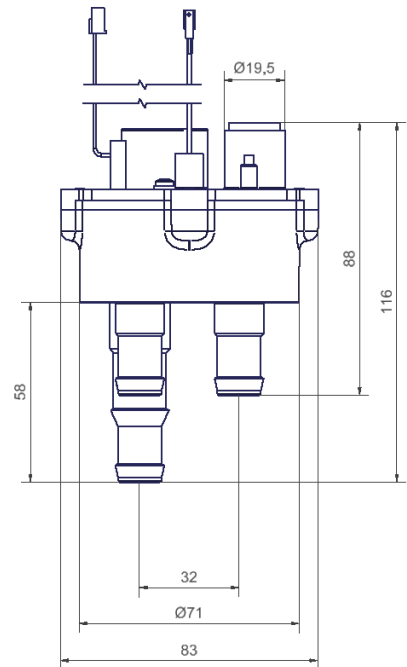
**HEB**  
SYSTEMTECHNIK

## Disc allocator– „Pivooo“

For wastewater treatment plants

### Technical data:

Design:	Disk allocator
Function:	rotating valve, electrical driven
Connection type:	Thread / Socket
Inlet:	Socket Ø19,5mm
Outlet:	2-4-times socket
Operating pressure:	0 to 0,5 bar
Rotation under pressure:	up to approx. 200mbar
Switching time:	max. 1 second
Nominal diameter:	10 mm
Material body:	glass-fibre reinforced plastic
Material seal:	NBR (Perbunan)
Temperature, ambient:	-20°C to +70°C
Temperature, fluid:	-20°C to +50°C
Supply voltage:	24V DC
Actuation:	stepper motor, bipolar



*Alles integriert!*



**HEB**  
SYSTEMTECHNIK

## 3/2-Way valve

For wastewater treatment systems

### Technical data:

Function:	3/2-Way, directly operated
Connection type:	Thread / socket
Connection size:	inlet G1/2
Qty. outlet:	2x G 1/2
Operating pressure:	0 to 0,4 bar
Nominal diameter:	13 mm
Material body:	Aluminum
Material seal:	NBR (Perbunan)
Temperature, ambient:	-10°C to +70°C
Temperature, fluid:	-10°C to +50°C
Supply voltage:	230V, 50Hz
Power consumption:	60mA
Protection class:	IP65 (with plug connector)



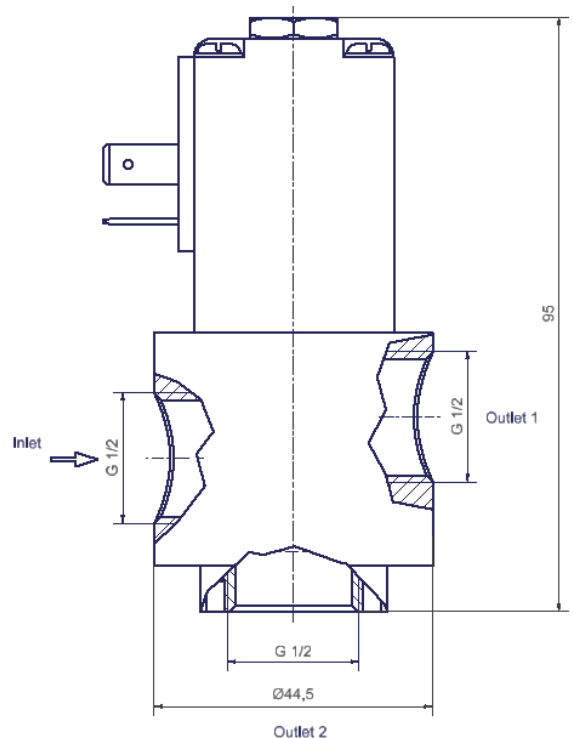
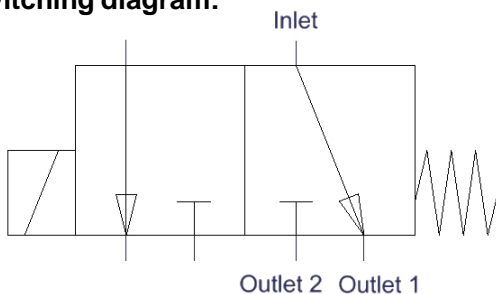
### Characteristics:

- Compact design
- Low price

### Optional:

- Plug connectors with prefabricated cable
- Brass or plastic hose connectors

### Switching diagram:





## 3/2-Way valves plastic

### Technical data:

Function:	3/2-Way, switching unpressurised
Connection type:	gluing sleeve, socket, thread
Connection size:	Ø40
Qty outlets:	2x G 1/2
Operating pressure:	0 bar
Nominal pressure:	PN6
Nominal diameter:	22/ 32/ 50 mm
Material body:	PVC
Material seal:	NBR (Perbunan)
Temperature, ambient:	-10°C to +50°C
Temperature, fluid:	-10°C to +50°C
Supply voltage:	230V, 50Hz
Duty cycle:	30%; max. 8min / 15min off
Power consumption:	60mA
Protection class:	IP65 (with plug connector)

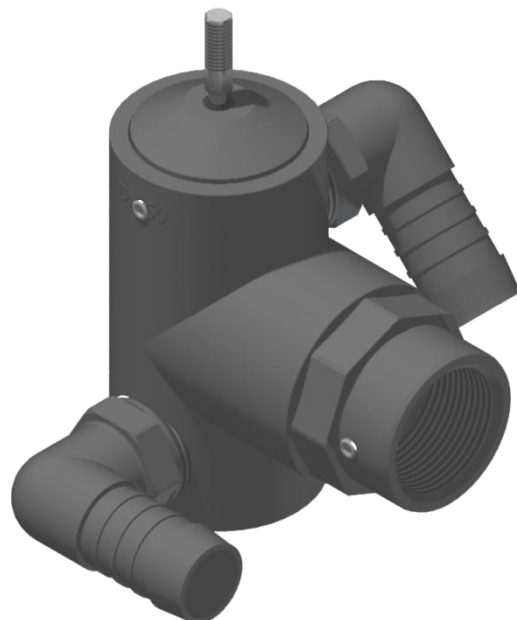
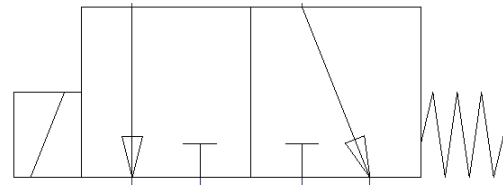


### Characteristics:

- Compact design
- Plunger chamber sealed against the fluid

### Optional:

- Plastic hose connectors
- Gluing sleeve



Alles integriert!



**HEB**  
SYSTEMTECHNIK

## Accessories & spare solenoids

For air manifolds

### bonnet

Item	Voltage	
100234	230V / 50Hz	Standard
102835	205V DC	Silent
101951	24V DC	Silent



#### Technical data:

Temperature, ambient:	-10°C to +70°C
Temperature, fluid:	-10°C to +50°C
Power consumption:	60mA
Protection class:	IP54 (with plug connector)

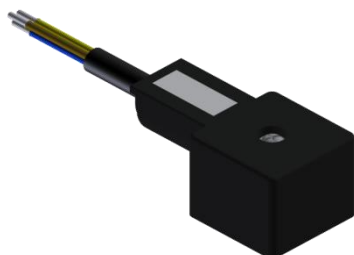
### Plug connector

#### Technical data:

Norm:	DIN EN 175301-803-A
Design:	Form A
Protection class:	IP54
Seal:	NBR

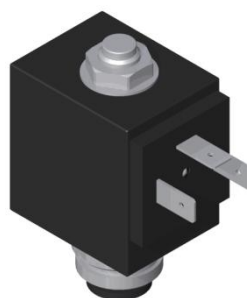
Item	Description	Connection	Features
100169	Clamping range 6-8mm	2 pole+PE	
102879	Clamping range 5-7mm	2 pole+PE	With rectifier and varistor
100373	Cable length 500mm	2 pole+PE	

Customized cable length available on request



### bonnet

Item	Seat	Seat depth
101343	Ø11mm	11mm
101921	Ø11mm	23,5mm
101571	Ø11mm	21mm



#### Technical data:

Temperature, ambient:	-10°C bis +70°C
Temperature, fluid:	-10°C bis +50°C
Supply voltage:	230V / 50Hz
Power consumption:	60mA
Schutzart:	IP64 (mit Dichtung Gerätesteckdose)
Connection thread:	M20x1

**Compatible to manifolds with a  
seat connection thread M20x1**